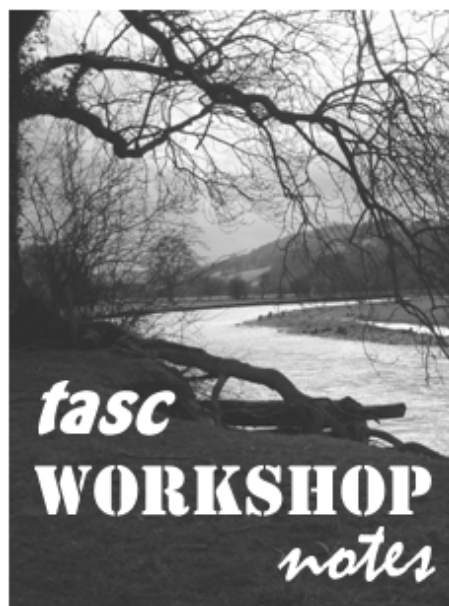


The Severn Suite

The **Severn Suite** is a suite of social dances and tunes composed and arranged by **John Kirkpatrick** and **Karen Tweed** for the village of Llandinam commissioned by TASC. There are sixteen pieces in the original but this workshop uses the following.

- Fanfare for the Llandinam Bellringers
- St Llonio's March
- Canon Fodder
- Ted Morris's Christmas Coal Chase
- The Hafren Hornpipe and a Half
- The Swn-y-Coed Waltz
- Severn Up



Please continue using them after the workshop, but remember they are covered by copyright. Please see the back page for full details.

standard version (also available for Bb instruments and cello)

1. Fanfare for the Llandinam Bellringers

STRUCTURE/FORM: repeat as needed

Composed by
Karen Tweed 2006
© May Monday Publishing
from THE SEVERN SUITE

play 8va up

♩ = 216

Accordian 1

Accordian 2

3. St Llonio's March

Tweed/Kirkpatrick 2006
from THE SEVERN SUITE

♩ = 180

A G C D G C D G C D G G C D



G C D G C D G C D G G G



B D G A D G A D G A



D G A D G D A D



Detailed description: This block contains the main melody for the march. It is written in treble clef with a key signature of one sharp (F#). The piece starts in 5/4 time and changes to 6/4 time at the end of the first system. Section A consists of two systems of music. Section B also consists of two systems. The melody is accompanied by a bass line of dotted half notes.

STRUCTURE/FORM: AA/BB//AA/BB//
for as long as the dancers are happy to dance

Violin II
♩ = 180



Detailed description: This block contains the accompaniment for Violin II. It is written in treble clef with a key signature of one sharp (F#). The piece starts in 5/4 time and changes to 6/4 time at the end of the first system. The accompaniment consists of a steady rhythm of dotted half notes.

7. Canon Fodder

STRUCTURE/FORM: AA/BB X4 plus BBBB
plus last 4 bars of B

Composed by
John Kirkpatrick 2006
© Squeezer Music
from THE SEVERN SUITE

♩. = 99

A Accordion 1 A D A D G D G A

D A D G D 1. A D 2. A D

B Accordions 1 & 2 D G D D G A

D G A D G 1. A D 2. A D

Canon Fodder

Violin II

♩. = 160

1. 2.

10. Ted Morris's Christmas Coal Chase

Composed by
Karen Tweed 2006
© May Monday Publishing
from THE SEVERN SUITE

STRUCTURE/FORM: AA/BB// ad infinitum

♩ = 138

A Accordions 1&2

B

Violin II
♩ = 138

11. The Hafren Hornpipe and a Half

Composed by
John Kirkpatrick 2006
© Squeezer Music
from THE SEVERN SUITE

STRUCTURE/FORM: //AA//BB// ad infinitum

♩ = 135

A

B

Violin II
♩ = 135

12. The Swn-y-Coed Waltz

John Kirkpatrick March 2006
from THE SEVERN SUITE

♩-153

A D A D G A

Em A A D A D

A D Em G D

A D B B Em F#

Bm Bm Bm Em F# Bm

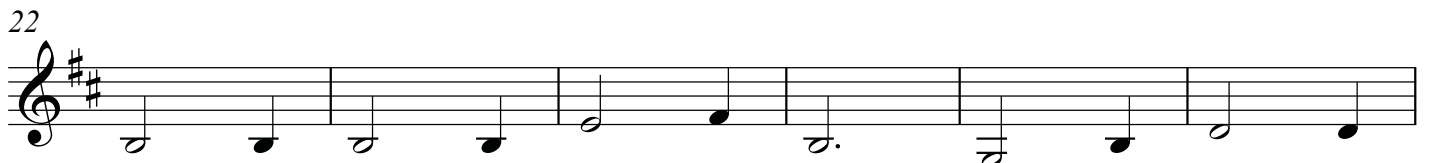
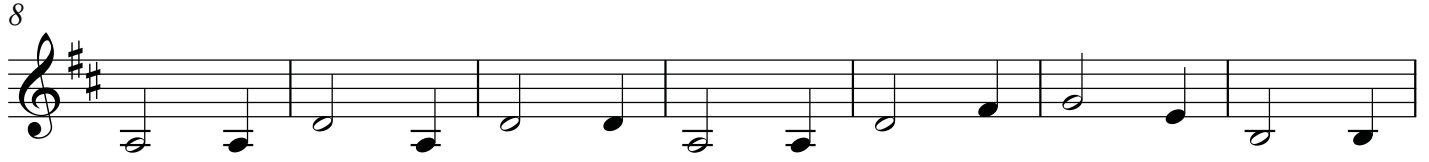
G D A D G

D A D

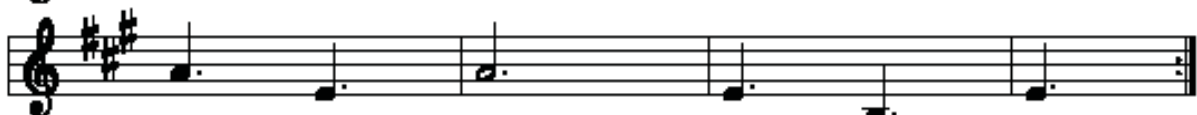
STRUCTURE/FORM: AA/BB//AA/BB//AA/BB//

12 Swn-Y-Coed Waltz

Violin II $\text{♩} = 130$



Severn Up *Violin II*



16. Severn Up

STRUCTURE/FORM: //AA/BB/CC/DD X7 + AA/BB//

Composed by

John Kirkpatrick 2006

© Squeezer Music

from THE SEVERN SUITE

♩. = 99

A

E A E A D A

D E A E A E B E

B

E A E

A D E A

C

E Am E Am Dm E

F C F C G F C

D

C F C Dm

Em Am Dm Am Dm Am Dm E Am

16. Severn Up

STRUCTURE / FORM: //AA/BB/CC/DD X7 + AA/BB//

Composed by
John Kirkpatrick 2006
© Squeezer Music
from THE SEVERN SUITE

Second Part

♩. = 99

The musical score for the Second Part consists of eight staves of music. The key signature is D major (two sharps) and the time signature is 3/4. The music is written in treble clef. It begins with a repeat sign and a first ending bracket. The melody is primarily composed of eighth and quarter notes, with some rests. The piece concludes with a double bar line and repeat dots.

STRUCTURE / FORM: //AA/BB/CC/DD X7 + AA/BB//

John Kirkpatrick 2006
© Squeezer Music
from THE SEVERN SUITE

Third Part

♩. = 99

The musical score for the Third Part consists of eight staves of music. The key signature is D major (two sharps) and the time signature is 3/4. The music is written in treble clef. It begins with a repeat sign and a first ending bracket. The melody is primarily composed of eighth and quarter notes, with some rests. The piece concludes with a double bar line and repeat dots.

The Severn Suite

The tunes may be photocopied by the purchaser or the purchaser's group, band or school for use in participative workshops or live performance by that group, band or school, providing the composers and the commissioning body are fully acknowledged in an on-stage announcement, and full copyright details are clearly included in any printed programme.

Otherwise all rights reserved and no part of this publication may be reproduced or transmitted in any form or by any means, electronic, or mechanical, including photocopy, recording, or in any information and storage and retrieval system without permission in writing from the publisher.

First published by TASC in 2007
Copyright TASC 2007

Music © May Monday Publishing or Squeezer Music 2006

**The Severn Suite book and CD is obtainable from bookshops or directly from TASC
ISBN 978-0-9556537-0-4**

Arrangements

Additional parts have been written by **Kitty Greenwood** and may be used on the same terms as above.

Traditional Art Support in the Community(TASC)
Registered Charity 1042144
Swn-y-Coed
Llandinam,Powys
SY17 5DJ
+44 (0)1686 688102
info@tradartsupport.org.uk
www.tradartsupport.org.uk